

PRISMASET

Modern. Robust. Sustainable.

se.com/prismaset



Life Is On

Table of contents

New generation of
switchboards

3

Design
excellence

6

Improved
robustness

9

Sustainability

11

Easy to
upgrade

15

Effective busbar system

17

A few options to make
your panel smarter

20

PrismaSeT 6300

26

Redefining
the experience

28

New Generation of Switchboards

New generation of switchboards

Design excellence

Improved robustness

Sustainability

Easy to upgrade

Effective busbar system

A few options to make your panel smarter

PrismaSeT 6300

Redefining the experience



New generation of switchboards

PrismaSeT is a new generation of Schneider Electric low-voltage switchboards up to 6300A.

PrismaSeT improves customer experience with a new ergonomic design, increased robustness and sustainable green packaging. Being one of the most flexible and complete modular system on the market, PrismaSeT allows for the innovative fire prevention solutions for increased safety.



PrismaSeT G
Wall-Mounted



PrismaSeT G
Floor Standing



PrismaSeT P



Modern and sustainable switchboard, everywhere for everyone

Enhance buildings with modernity, sustainability, and design excellence



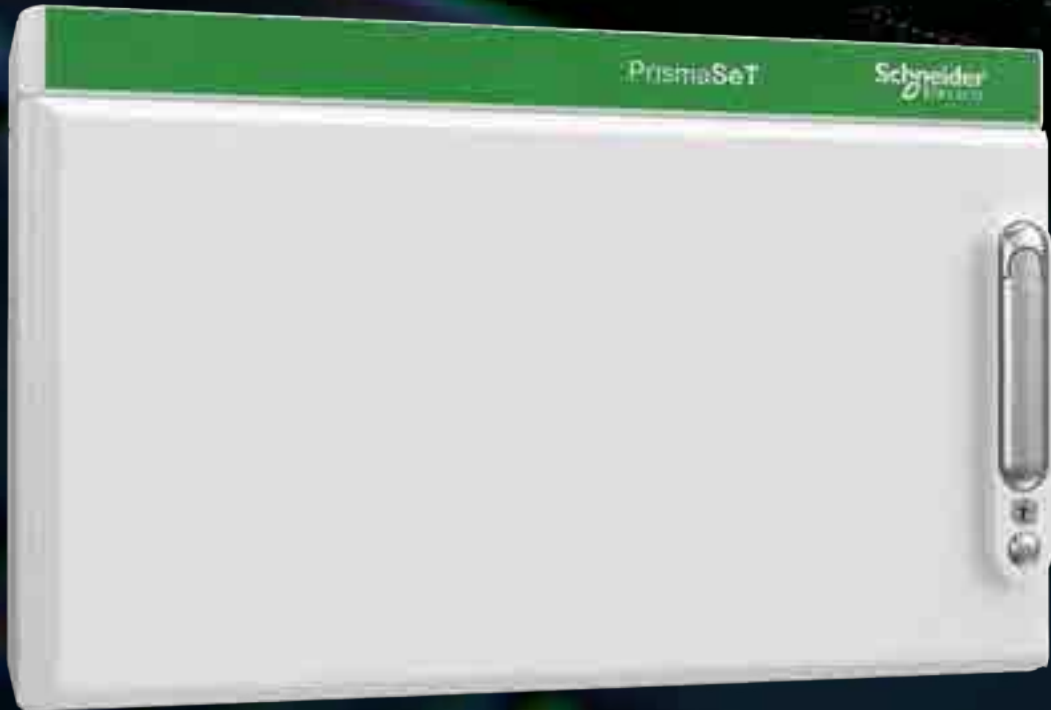
Robust



Modern



Sustainable



Design Excellence

New generation of switchboards

Design excellence

Improved robustness

Sustainability

Easy to upgrade

Effective busbar system

A few options to make your panel smarter

PrismaSeT 6300

Redefining the experience



Design excellence

To ensure state-of-the-art equipment that you can be proud of.

The improved design reflects the quality and prestige of the new switchboard.

Signature green Schneider Electric™ bar for connectivity
(color Pantone 355c)

New white color for switchboard
(color RAL9003)

New Handle

- Robust design
- Solid lever gripping
- New key manipulation to unlock handle



New commercial references

All commercial references are updated from 0xxxx to LVS0XXX

Unique commercial references created for new parts



PrismaSeT P



PrismaSeT G (wall-mounted)



**PrismaSeT G (wall-mounted)
with a green cover**



PrismaSeT G (floor-standing)

Standard green cover
No unique references



Improved Robustness

New generation of switchboards

Design excellence

Improved robustness

Sustainability

Easy to upgrade

Effective busbar system

A few options to make your panel smarter

PrismaSeT 6300

Redefining the experience

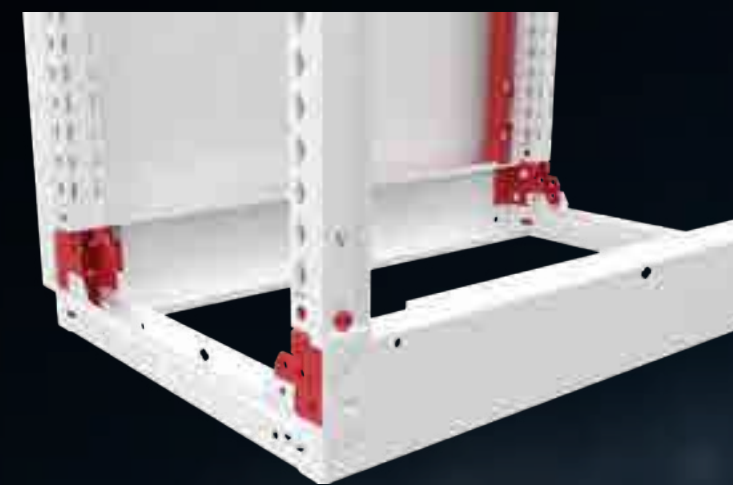


Improved robustness



Reinforced frame & doors to maximize panel rigidity in any environment.

During transportation, everything stays aligned and in line with the standards.



Reinforced Frame

- Higher mechanical resistance during transportation
- Reinforced angles
- Minimal deformation on 3 axis
- Adapted transportation accessories

Reinforced Plain Doors

- Open/close without noise or forcing
- Reinforcement bar
- Thickness 1,5 mm
- 3 hinges



Sustainability

New generation
of switchboards

Design excellence

Improved
robustness

Sustainability

Easy to upgrade

Effective busbar
system

A few options
to make your
panel smarter

PrismaSeT 6300

Redefining
the experience



Sustainable packaging

Reduce your costs and your carbon footprint with more sustainable packaging made entirely of cardboard



Progressive removal of plastic and polystyrene from all packaging.
100% recyclable waste helps gain time and money for sorting waste.



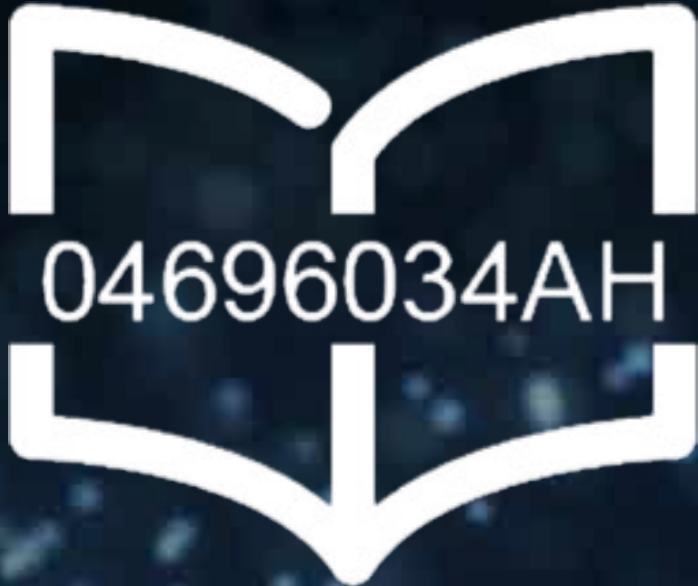
100%
carton



Sustainable instruction sheets (QR code)

No more systematic printed instruction sheet. Printed instruction sheet can only be ordered once, containing all instructions.

Each package contains one printed leaflet with all safety warnings and a link towards digital assembly instruction sheet.

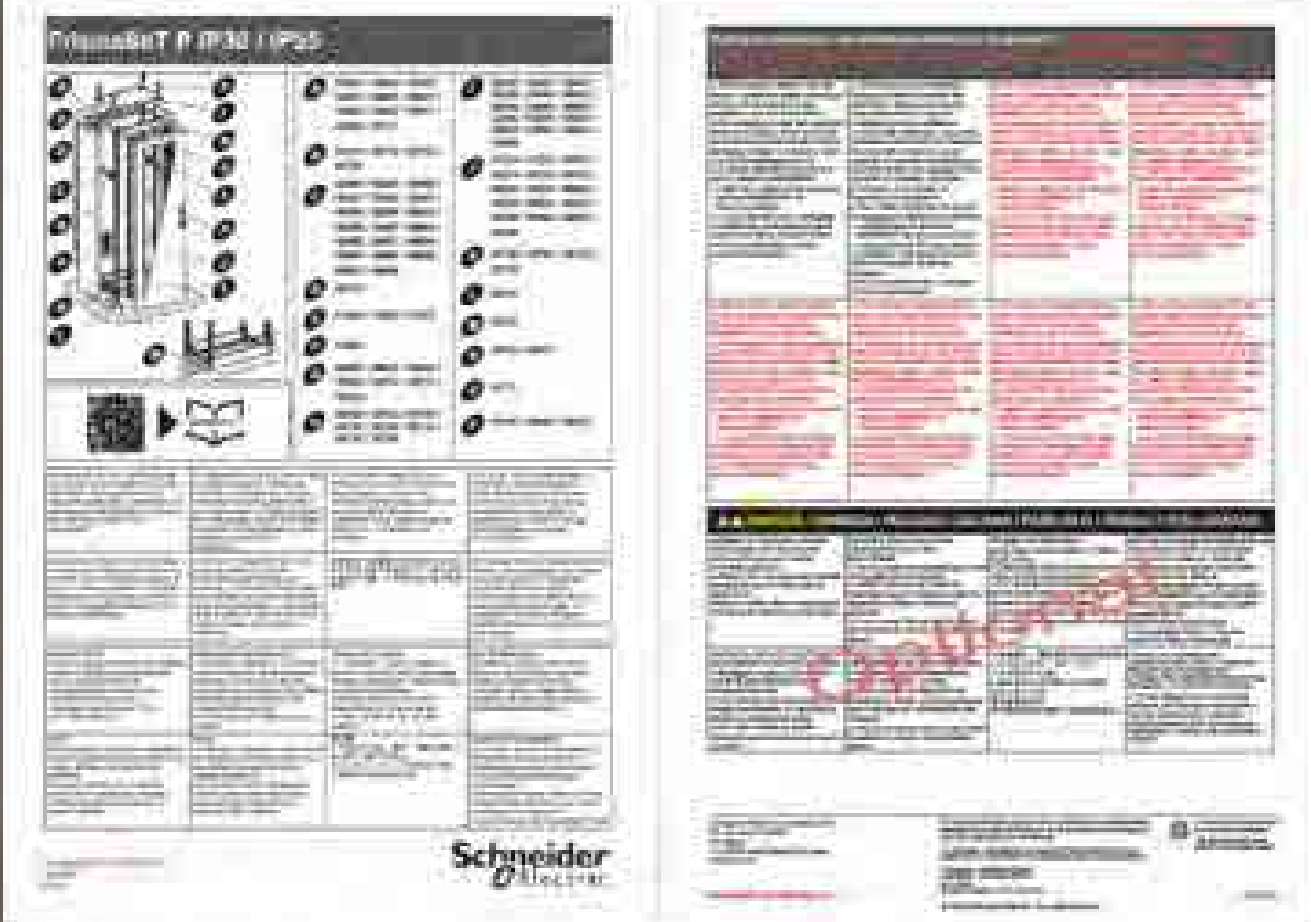


Sustainable super notice

Full and light version of super notice 04696505



24 pages
to 2 pages



Easy to Upgrade

EcoXpert
Certified by
Schneider Electric

New generation
of switchboards

Design excellence

Improved
robustness

Sustainability

Easy to upgrade

Effective busbar
system

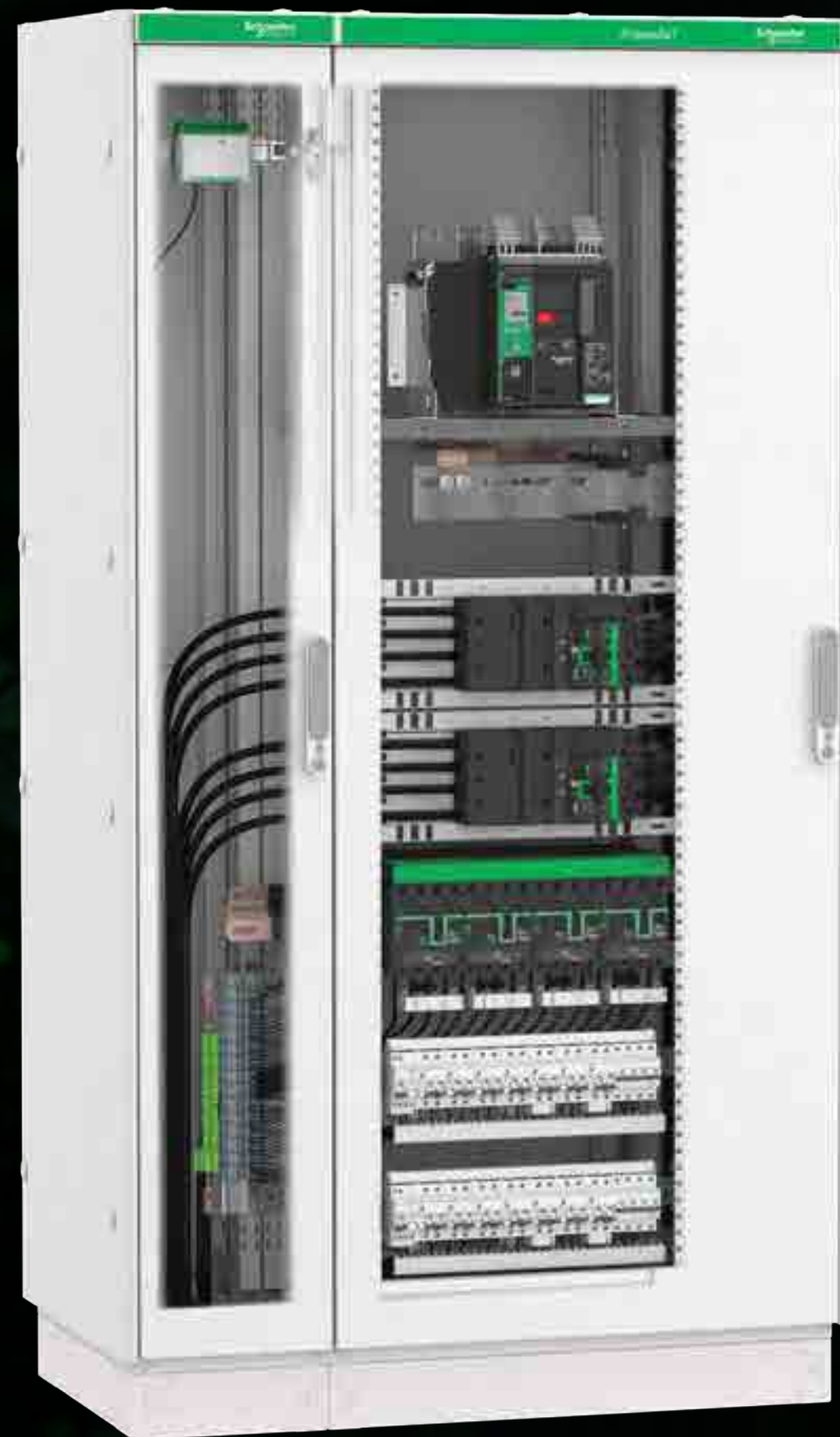
A few options
to make your
panel smarter

PrismaSeT 6300

Redefining
the experience



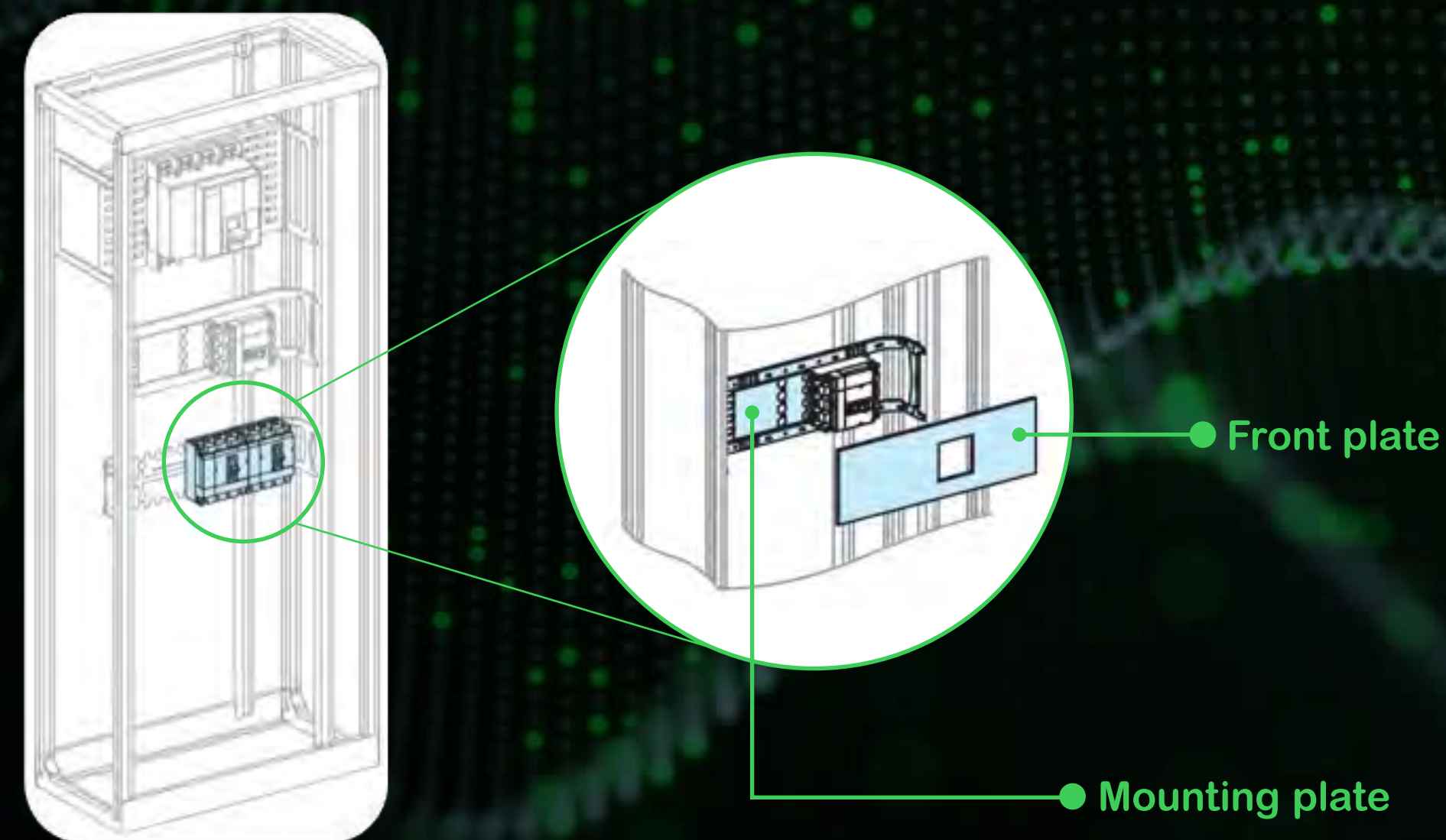
Easy to upgrade



Add devices in an easy way to upgrade your switchboard

Device installation

- Add a mounting and a front plate to your switchboard
- Gain assembly time while you add new devices for your switchboard
- Gain in modularity with type tested plates



Effective Busbar System

New generation
of switchboards

Design excellence

Improved
robustness

Sustainability

Easy to upgrade

Effective busbar
system

A few options
to make your
panel smarter

PrismaSeT 6300

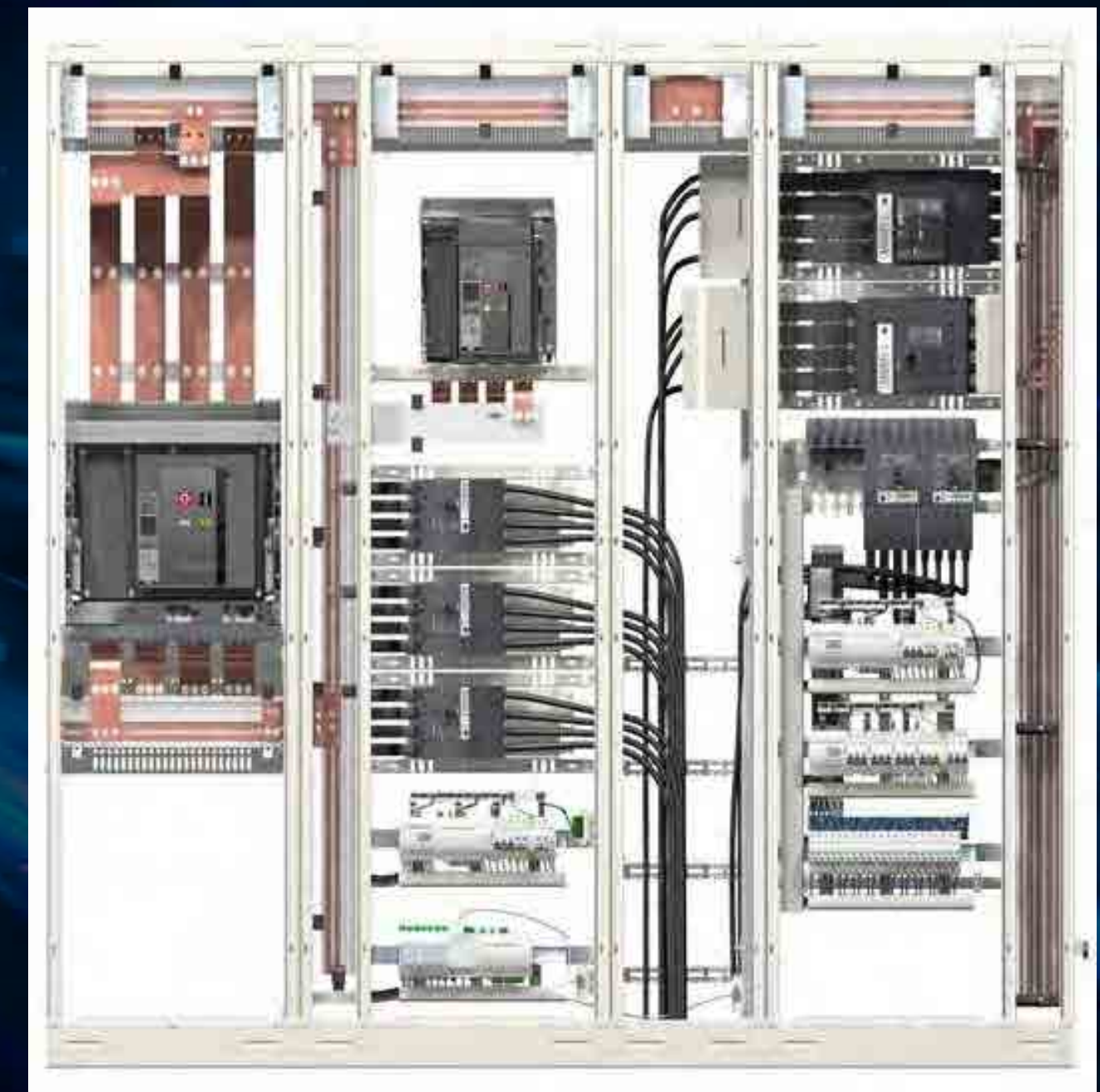
Redefining
the experience



Lineryg busbar systems

Unique profile, designed with the ratings and capacity you need.

Easy to install within PrismaSeT cubicles or enclosures



New generation
of switchboards

Design excellence

Improved
robustness

Sustainability

Easy to upgrade

Effective busbar
system

A few options
to make your
panel smarter

PrismaSeT 6300

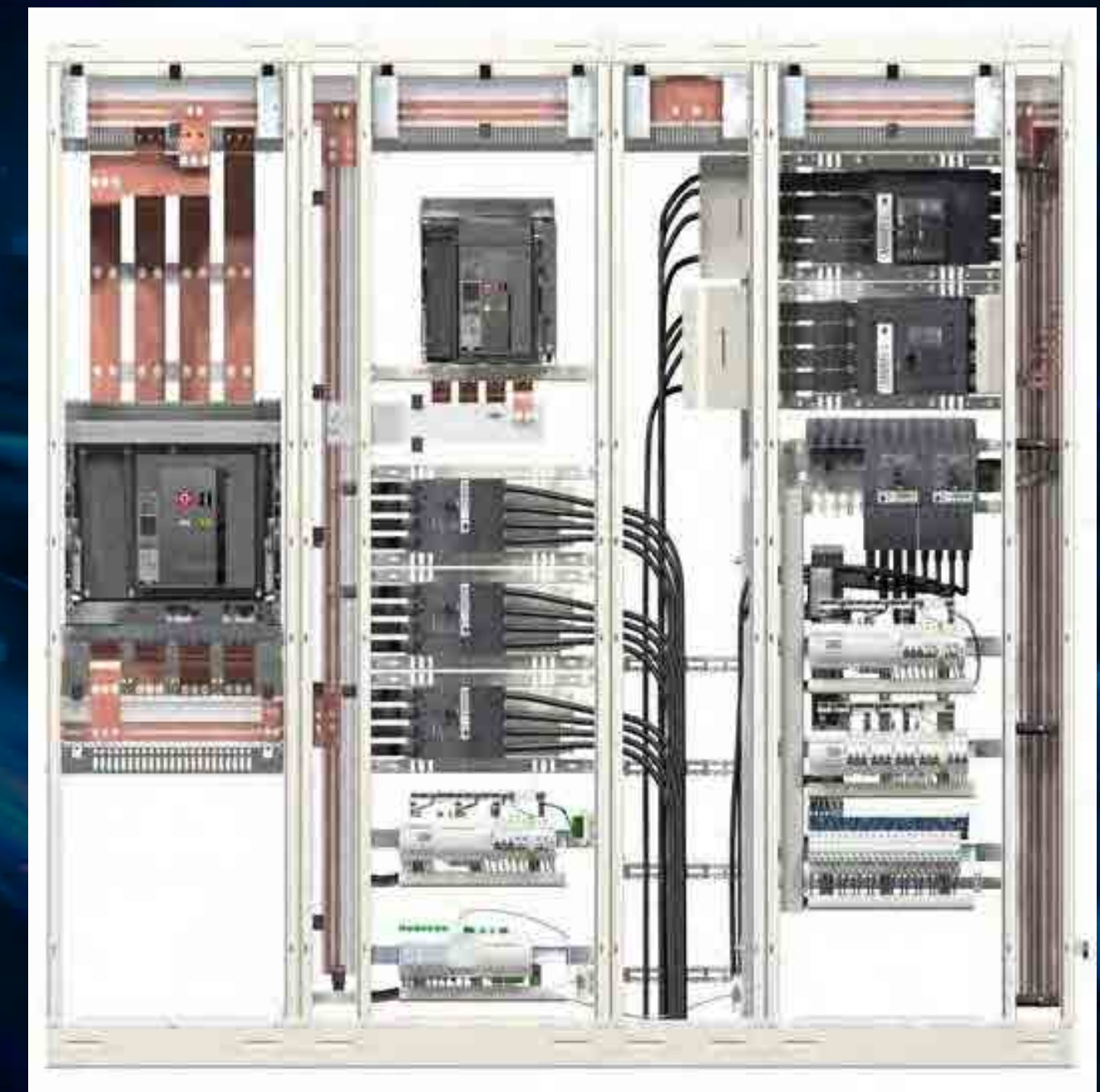
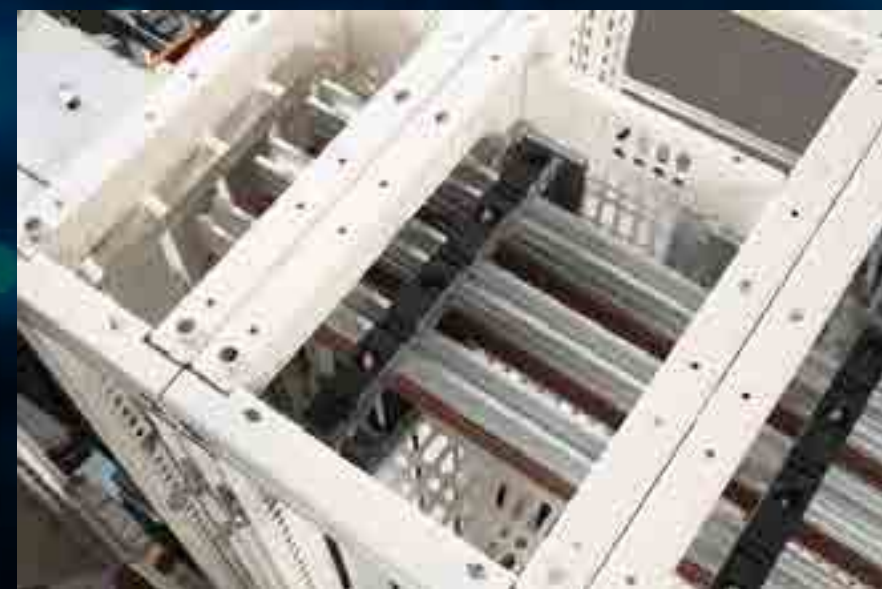
Redefining
the experience



Linery busbar systems

Linery Evolution's unique profile, designed with the ratings and capacity you need

- Aluminum alloy (90%) of Busbars allows the production of thin profiles with complex shapes and non-homogeneous cross-sections, offering advantages over copper: anodized profiles for perfect radiation thermal exchange
- To ensure good electrical contact, the aluminium is covered with a cold projected copper spray along the entire height of the bar



New generation
of switchboards

Design excellence

Improved
robustness

Sustainability

Easy to upgrade

Effective busbar
system

A few options
to make your
panel smarter

PrismaSeT 6300

Redefining
the experience



A Few Options to Make Your Panel Smarter



A few options to make your panel even smarter



Gateway



EcoStruxure Panel Server

- The next generation gateway enabling fire prevention, power availability and energy efficiency solutions
- IP connectivity to BMS or SCADA
- Faster data trending for advisor advanced analytics



Fire prevention



PowerLogic HeatTag

- Be alerted in case of cable overheating
- Get easily access to temperature and hygrometry trending
- Anticipate issues to take immediate action to reduce risk of electrical fire



Power availability



Acti9 Active

- empowers building owners to prevent electrical mishaps and power disruption
- proactively monitors and alerts of electrical faults, including the risk of fire, electrical shocks, equipment damage, and frequent electrical surges



Energy efficiency



PowerLogic PowerTag

- provides precise, real-time data on energy, currents, power, voltage, and power factor
- accurately monitors energy consumption and wirelessly communicates this data to your mobile device in real-time through a gateway



EcoStruxure Panel Server

The New Generation of Gateways to empower your switchboard



EcoStruxure Panel Server is the next generation of gateway, providing a seamless connection of wired or unwired smart IoT devices to your edge control software or advisor.

It is a foundational enabler for Schneider Electric EcoStruxure solutions.

EcoStruxure Panel Server gives you access to the information you need to protect, maximize and optimize your power system.



Power Availability

New generation of **ComPacT** breakers

ComPacT breakers and wireless auxiliary

- This new generation of ComPacT breakers will maximize your power availability, while being simpler and faster to install
- Plug and play technology for reduced installation time, and safe reliable connections, should you want to stay wired
- Save time and space with integrated earth leakage protection and monitoring via MicroLogic Vigi trip unit technology for NSXm and NSX



Fire Prevention

Act before smoke even appears



New type of sensor

- Revolutionary innovation that allows building operators to anticipate and act to prevent any electrical fire
- Very easy to install with DIN rail mounting and wireless communication
- Drastically reduce the number of expensive infrared detection campaigns that you run!

Artificial intelligence

Artificial Intelligence algorithms continuously analyze in real time the air inside the panel, to detect any cable overheating

EcoStruxure Facility Expert

When an anomaly is detected, a notification is instantaneously received by the facility manager, on their smartphone



Energy efficiency

Wireless solution inside and out of the switchboard

PowerLogic PowerTag

- PrismaSeT Active allows you to efficiently monitor and optimize your energy consumption, through the easy use of PowerLogic PowerTag sensors
- Small in size, large in performance, PowerTag energy sensors accurately monitor energy consumption and wirelessly communicate this data to your mobile device in real-time
- Use energy more efficiently and economically on all electrical loads, with simple wireless connectivity



PrismaSeT 6300

New generation of switchboards

Design excellence

Improved robustness

Sustainability

Easy to upgrade

Effective busbar system

A few options to make your panel smarter

PrismaSeT 6300

Redefining the experience



PrismaSeT 6300

PrismaSeT 6300 is a functional type tested system combining Spacial SF enclosure and PrismaSeT modularity

PrismaSeT 6300



Ready to face a harsh environment

- PrismaSeT enclosures for electrical distribution in Industry & Infrastructure
- 2 color versions available:
 - New white color RAL9003 with Schneider Electric signature on the top
 - Grey color RAL7035 with optional Schneider Electric signature on the top

New offer for partners up to 6300A

- New Linergy LGYE 6300A aluminum busbar offer has been developed to cover the needs from 4000A to 6300A



Redefining the Experience

New generation
of switchboards

Design excellence

Improved
robustness

Sustainability

Easy to upgrade

Effective busbar
system

A few options
to make your
panel smarter

PrismaSeT 6300

Redefining
the experience



Redefining your experience



Become a trusted partner with **proven robust and modern solutions.**

Enhance fire prevention with IEC 61439-1 & 2 type-tested functional units for increased safety.

Save time and ensure **simple repeatable project deployments** with modular & functional enclosures for scalable architectures.

Reduce your costs and your carbon footprint with more sustainable packaging.



Life Is On



Learn more about
PrismaSeT

se.com/prismaset



Schneider Electric

35 rue Joseph Monier
92500 Rueil-Malmaison, France
Tel : +33 (0)1 41 29 70 00

